

TR4 Bluetooth[®] ThermoRecorder

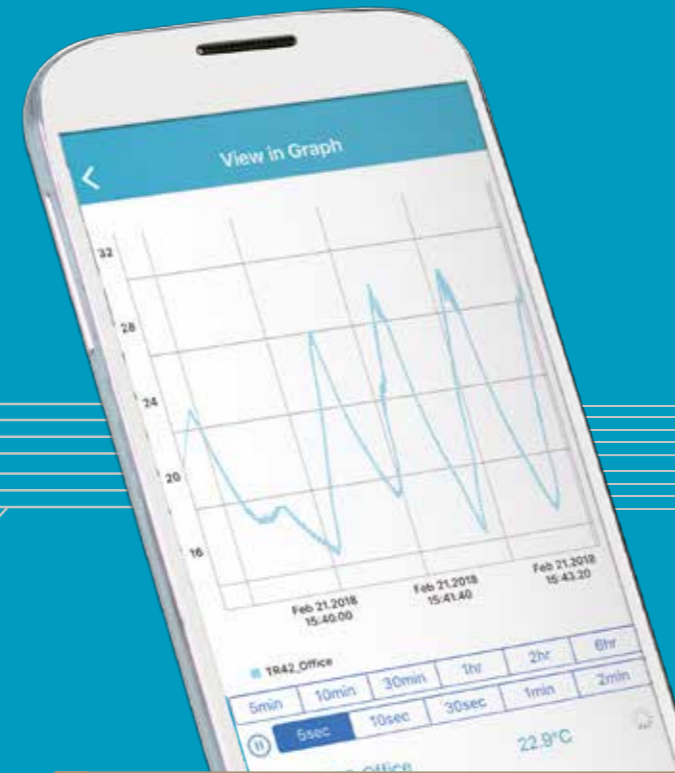
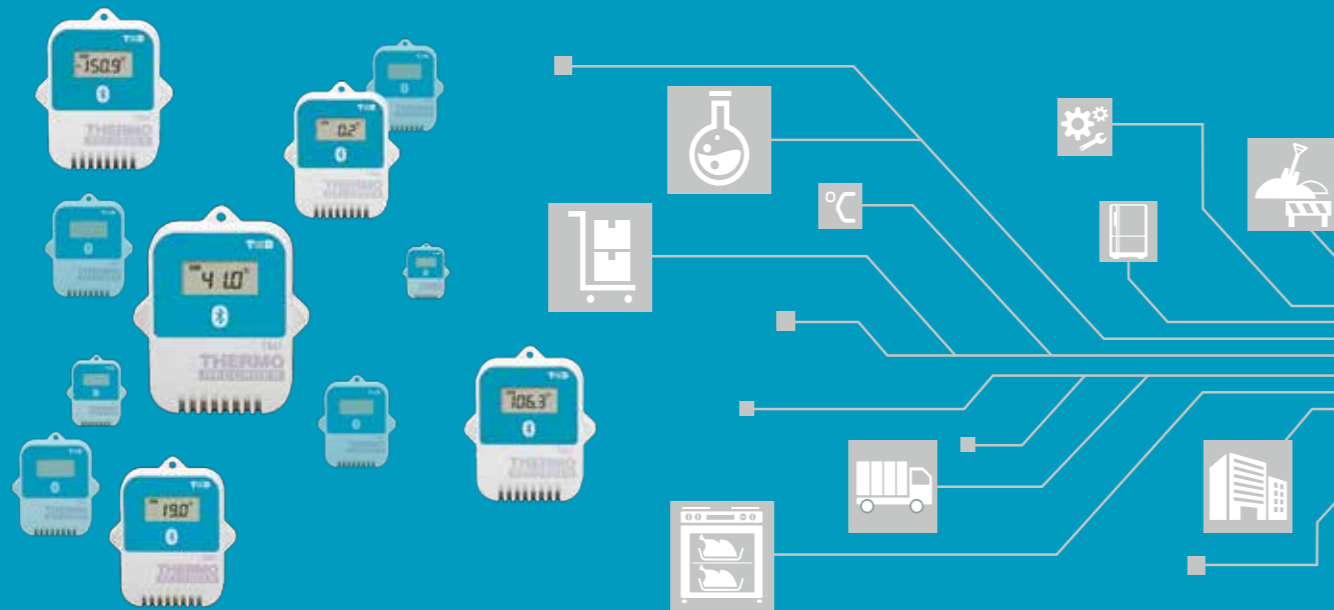


TR4 + Mobile Device = Quick Anywhere Anytime Access

Easy Connection via Bluetooth

Apps for Real-time Monitoring, Graph Display Auto-Upload, and Report Creation

Share to Free Cloud Service "T&D WebStorage Service"



T&D WebStorage Service
 Access Data Anytime, Anywhere Available Free of Charge!

tandd.com/product/series/tr4.html



Bluetooth Data Loggers

Internal Sensor for Better Water Protection

TR41

Temperature 1ch (Internal Sensor)
 -40 to 80 °C
 IP67 Immersion Proof



External Sensor for Quick Response

TR42

Temperature 1ch (External Sensor)
 -60 to 155 °C
 IP64 Splash proof (rated for use in daily life)
 Optional Sensors Available



Both TC/PT Sensor Compatible Unit

TR45 **Thermocouple** **Pt100/Pt1000**

Temperature 1ch (Thermocouple/PT Sensor)
 -199 to 1760°C (depending on sensor type)
 Sensors Not Included



Rear Terminal Block



Mobile Apps for Your Needs

ThermoREC

Allows for making TR4 settings, monitoring temperature changes on graphs, and uploading the displayed data to T&D WebStorage Service. (iOS, Android)



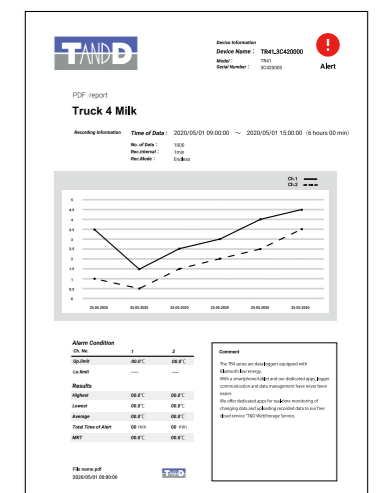
ThermoStorage

Allows for seamlessly uploading recorded data from a collection of TR4 loggers to T&D WebStorage Service. (iOS, Android)



TR4 Report

Allows for generating PDF reports of recorded data for printing, emailing, saving and sharing. (Currently iOS only)



Specifications

	TR41	TR42	TR45	
Measurement Channels	Temperature 1ch	Temperature 1ch	Temperature 1ch	
Sensor	Thermistor (Internal)	Thermistor	Thermocouple Type K, J, T, S, R	Pt100, Pt1000 (3-wire, 4-wire *1)
Measurement Units	°C, °F	°C, °F	°C, °F	
Measurement Range	-40 to 80 °C	-60 to 155 °C	K -199 to 1370 °C J -199 to 1200 °C T -199 to 400 °C S -50 to 1760 °C R -50 to 1760 °C	-199 to 600 °C
Accuracy	Avg.±0.5 °C	Avg.±0.3 °C at -20 to 80 °C Avg.±0.5 °C at -40 to -20 °C, 80 to 110 °C Avg.±1.0 °C at -60 to -40 °C, 110 to 155 °C	Thermocouple Measurement (Sensor inaccuracies not included) Type K, J, T : ±(0.5 °C + 0.3 % of reading) at -100°C or above Type S, R : ±(1.5 °C + 0.3 % of reading) at 100°C or above Cold Junction Compensation ±0.5 °C *at 10 to 40 °C ±0.8 °C *at -40 to 10 °C, 40 to 80 °C Note: The temperature range shown above (*) represents the operating environment of the logger.	±(0.3 °C + 0.3 % of reading) *at 10 to 40 °C ±(0.5 °C + 0.3 % of reading) *at -40 to 10 °C, 40 to 80 °C
Measurement Resolution	0.1 °C	0.1 °C	Type K, J, T : 0.1 °C Type S, R : approx. 0.2 °C	0.1 °C
Responsiveness	Thermal Time Constant: Approx. 15 min. Response Time (90%): Approx. 35 min.	Thermal Time Constant: Approx. 30 sec. (in air) Approx. 4 sec. (in agitated water) Response Time (90%): Approx. 80 sec. (in air) Approx. 7 sec. (in agitated water)		
Logging Capacity	16,000 readings			
Recording Interval	Select from 15 choices: 1, 2, 5, 10, 15, 20, 30 sec. or 1, 2, 5, 10, 15, 20, 30, 60 min.			
Recording Mode	Endless (Overwrite oldest data when capacity is full) or One Time (Stop recording when capacity is full)			
LCD Display Items	Measurements, Recording Status, Battery Life Warning, etc.			
Communication Interfaces	Bluetooth 4.1 (Bluetooth low energy)			
Power	Lithium Battery (LS14250) x 1			
Battery Life *2	Approx. 1 month *3 to 1.5 years *4		Approx. 1 month *3 to 1 year *4	
Dimensions	H 62 mm x W 47 mm x D 19 mm (excluding protrusions and sensor)		H 62 mm x W 47 mm x D 26.5 mm (excluding protrusions and sensor)	
Weight	Approx. 45 g		Approx. 50 g	
Operating Environment	Temperature: -40 to 80 °C (-25 to 80 °C during wireless communication)		Temperature: -40 to 80 °C (-25 to 80 °C during wireless communication) Humidity: 90 %RH or less (no condensation)	
Waterproof Capacity	IP67 Immersion proof	IP64: Splash proof *5 (rated for use in daily life)	None	
Accessories	-		Temperature Sensor TR-5106	Cable Clamp
Data Collection Devices	Lithium Battery (LS14250), Registration Code Label, Strap, User's Manual (Warranty Included)			
Software	Smartphone, Tablet ThermoREC, ThermoStorage, TR4 Report (For compatible OS versions, please refer to the Software page of our website.)			

*1: In the case of a 4-wire sensor, one wire will be left unused.

*2: Battery life varies depending upon multiple factors including ambient temperature, recording interval, usage of applications, and battery performance. All estimates are based on operations carried out with a new battery and are in no way a guarantee of actual battery life.

*3: Estimated minimum battery life when recording data at an interval of 1 second and constant graph display in the app.

*4: Estimated maximum battery life when recording data at an interval of more than 10 seconds and graph display in the app of less than 3 minutes a day.

*5: This is the waterproof capacity of the data logger with the sensor connected.

The specifications listed above are subject to change without notice.

- Colors in the photos in this catalog may be different from real product colors.
- The specification and designs of the products in this catalog are true as of 2021/01. Specifications are subject to change without notice.
- Microsoft and Windows are registered trademarks of Microsoft Corporation USA and other countries.
- The Bluetooth® word mark and logos are registered trademarks owned by Bluetooth SIG, Inc. and any use of such marks by T&D Corporation is under license.
- Company names and product names are trademarks or registered trademarks of each company.



817-1 Shimadachi, Matsumoto, Nagano 390-0852, Japan
Please send your inquiries to:
E-mail : sales@tandd.com
Facsimile : (+81) 263-40-3152